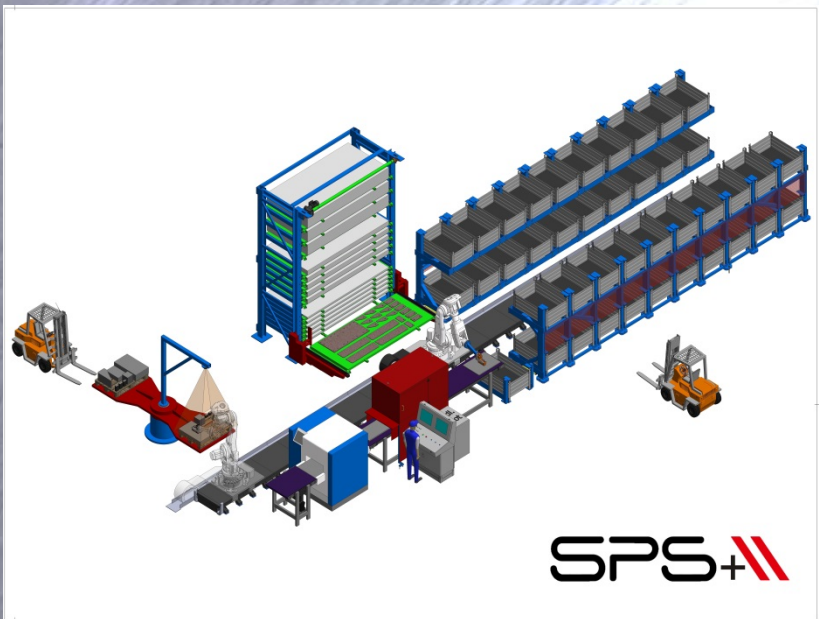


ZEMAN – Automation

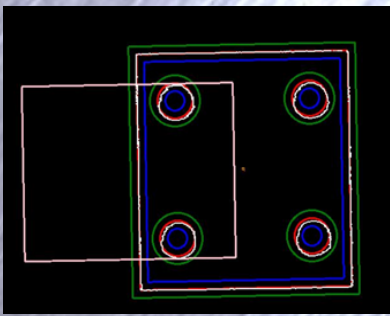


In Structural Steel Fabrication Scanning & Plate Sorting



SPS+

- FULL Control over Quality of Add-on parts*
- FULL Control over Location of Add-on parts*
- NEVER Lose an Add-on part*
- NEVER Assemble a faulty Add-on part*
- Data import: Tekla, Bocad, etc.*
- Choose sorting method (e.g beam/bin)*
- Auto placement of Add-on parts on conveyor*
- Scanning and measuring of Add-on parts*
- Auto Pick-up of Add-on parts*
- Auto Placement of parts in correspondent bin*
- Transport of bins via WIFI connected stacker*
- Continuous & Efficient work flow*



ZEMAN Bauelemente Produktions GmbH
Schlossfeld 5, 8811 Scheifling, AUSTRIA
T: +43 664 3264 266 - info@zeco.at - www.zebau.com



Why SPS and how does it work?

The SPS has been created to facilitate the plate management of steel fabricators all over the world.

A smart scanning system is being used to identify each plate in its dimension, shape and quality. This is the first step to ensure high standards in steel fabrication.

After automatically evaluating the characteristics of a plate, a rapidly moving robot sorts the workpiece according to the desired criteria into a designated box. Through fitting each box with an RFID chip, the position of each plate will be known throughout the complete production process and can be surveyed at any time with WIFI connected tablets.

Zeman is always seeking for advanced solutions in steel fabrication.

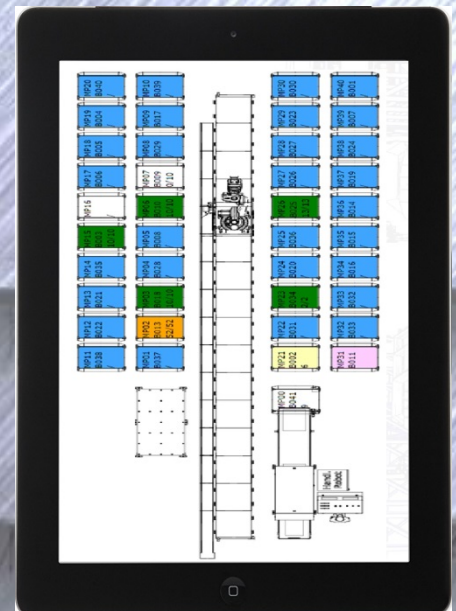
SPS is another great step ahead to help our customers to increase production quality, efficiency, facilitate management and administration.



SCANNING & QUALITY CHECK



ROBOTIC SORTING (15sec/part)



FULL CONTROL OF PRODUCTION